



US-UK SCIENTIFIC FORUM ON
Sustainable Agriculture

March 5-6, 2020



NATIONAL ACADEMY OF SCIENCES

and

THE
ROYAL
SOCIETY

Forum Attendees



Bojana Bajzelj
Researcher
Swedish University of
Agricultural Sciences
Uppsala, Sweden



Andrew Balmford
Professor, Zoology
University of Cambridge
Cambridge, UK



David Baulcombe
Royal Society Research
Professor, Plant Sciences
Cambridge University
Cambridge, UK



Tim Benton
Research Director
Environment and Resources
Program • Chatham House
London, UK



Ian Boyd
Professor Sir, Biology
University of St Andrews
St Andrews, UK



Daniel Brooks
Professor Emeritus, Ecology
and Evolutionary Biology
University of Toronto
Asheville, NC



Connie Burdge
Policy Adviser
Science Policy
The Royal Society
London, UK



Ranveer Chandra
Chief Scientist
Microsoft Azure Global
Redmond, WA



Parag Chitnis
Associate Director, National
Institute of Food and
Agriculture • United States
Department of Agriculture
Kansas City, MO



Luke Clarke
Head of International Affairs
(Americas, International
Organisations and Africa)
The Royal Society
London, UK



Jennifer Clements
Program Coordinator
National Academy of Sciences
Irvine, CA



Amanda Collis
Executive Director, Research
Strategy and Program
Biotechnology and Biological
Sciences Research Council
Swindon, UK



Sebsebe Demissew
Professor, Department
of Plant Biology and
Biodiversity Management
Addis Ababa University
Addis Ababa, Ethiopia



Cornelia Flora
Distinguished Professor
Emerita/Research Professor
Sociology
Iowa State University/
Kansas State University
Ames, IA



Ken Fulton
Executive Director
National Academy of Sciences
Irvine, CA



Sarah Garland
Recent PhD Graduate
Plant Sciences
University of Cambridge
Cambridge, UK



Leanne Gilbertson
Assistant Professor
Environmental Engineering
University of Pittsburgh
Pittsburgh, PA



Sarah Giles
Senior Policy Advisor
Science Policy
The Royal Society
London, UK



Sue Hartley
Vice-President for Research
Vice Chancellors Office
The University of Sheffield
Sheffield, UK



Jonathan Jones
Professor
Sainsbury Laboratory
Norwich, UK



Rattan Lal
Professor, School of Environ-
ment and Natural Resources
The Ohio State University
Columbus, OH



Tim Lang
Professor of Food Policy
Centre for Food Policy
City University of London
London, UK



Markita Landry
Assistant Professor
Chemical and Biomolecular
Engineering • University of
California, Berkeley
Berkeley, CA



Michael Lee
Professor, Sustainable
Agriculture Science
Rothamsted Research
Okehampton, UK



Zach Lippman
Professor, School of Biological
Sciences • Cold Spring Harbor
Laboratory-HHMI
Cold Spring Harbor, NY



Greg Lowry
Professor, Civil and
Environmental Engineering
Carnegie Mellon University
Pittsburgh, PA



Susan McCouch
Barbara McClintock Professor
Plant Breeding and Genetics
Cornell University
Ithaca, NY



Steve McGrath
Professor
Sustainable Agriculture
Sciences
Rothamsted Research
Harpenden, UK



Nathan Mueller
Assistant Professor
Ecosystem Science and
Sustainability; Soil and
Crop Sciences
Colorado State University
Fort Collins, CO



Giles Oldroyd
Russel R Geiger Professor
of Crop Science
Sainsbury Laboratory
University of Cambridge
Cambridge, UK



Tom Oliver
Professor of Applied Ecology
School of Biological Sciences
University of Reading
Reading, UK



Steve Olson
Consultant Writer
Seattle, WA

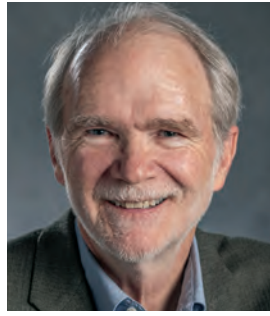




Donald Ort
 Professor
 Plant Biology
 University of Illinois
 Urbana, IL



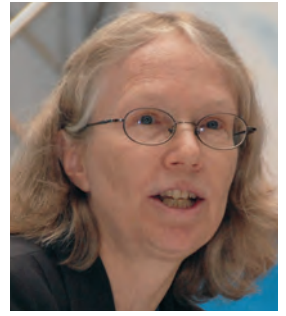
Christine Queitsch
 Professor, Genome Sciences
 University of Washington
 Seattle, WA



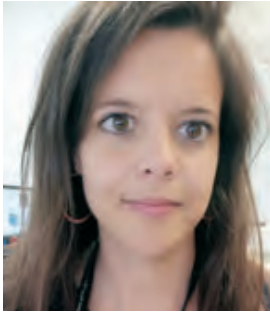
G. Philip (Phil) Robertson
 Professor, Department of
 Plant, Soil, and Microbial
 Sciences • Michigan State
 University • Hickory Corners, MI



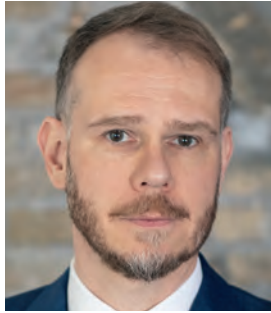
Sally Rocky
 Executive Director
 Foundation for Food and
 Agriculture Research
 Washington, DC



Cynthia Rosenzweig
 Senior Research Scientist
 Goddard Institute for Space
 Studies, NASA
 New York, NY



Pauline Scheelbeek
 Assistant Professor, Centre on
 Climate Change & Planetary
 Health • London School of
 Hygiene & Tropical Medicine
 London, UK



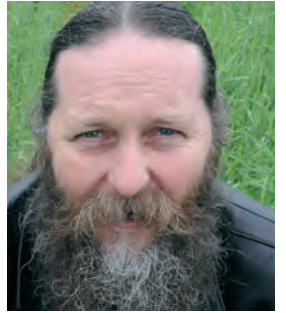
Dietram Scheufele
 Taylor-Bascom Professor
 Life Sciences Communication
 University of Wisconsin
 Madison, WI



Robin Schoen
 Director, Board on Agriculture
 and Natural Resources
 National Academies of Sciences,
 Engineering, and Medicine
 Washington, DC



Fran Sharples
 Senior Board Director,
 Board on Life Sciences,
 National Academies of Sciences,
 Engineering, and Medicine
 Washington, DC



Pete Smith
 Professor, Institute of
 Biological & Environmental
 Sciences • University of Aberdeen
 Aberdeen, UK



Marco Springmann
 Senior Researcher
 Nuffield Department of
 Population Health
 University of Oxford
 Oxford, UK



Anne Sylvester
 Program Director
 Division of Integrative
 Organismal Systems
 National Science Foundation
 Alexandria, VA



David Tilman
 Regents Professor, Ecology,
 Evolution and Behavior
 University of Minnesota
 St. Paul, MN



Alison Van Eenennaam
 Cooperative Extension
 Specialist, Animal Biotech-
 nology and Genomics
 Animal Science • University
 of California, Davis • Davis, CA



Eileen Wall
 Professor, Academic Division
 SRUC (Scotland's Rural
 College)
 Edinburgh, UK



Rachel Warren
 Professor, Tyndall Centre for
 Climate Change Research
 University of East Anglia
 Norwich, UK



Sue Wessler
 Professor, Department of
 Botany and Plant Sciences
 University of California,
 Riverside • Riverside, CA



Walter Willett
 Professor of Epidemiology
 and Nutrition
 Harvard T. H. Chan School
 of Public Health
 Boston, MA